

rider.sound

front of house

Count	Equipment	Description
1	Soundcraft K2	Analog audio console, 32 mic inputs, 8 aux sends, 4 stereo returns
3	BSS FCS-960	Dual Terzband Equalizer
1	BSS DPR-404	Quad compressor
1	Drawner DS404	Quad gate
1	TC Electronic M-One	Digital effects processor
1	Lexicon MPX-1	Digital effects processor

front of house / speakers

Count	Equipment	Description
2	Main PA	C6 (12"/2") powered by d&b
2	d&b Bass C7	single 18" powered by d&b
2	Front Fills	d&b E3 powered by d&b E-Pac
2	Delay	d&b E3 powered by d&b E-Pac
2	Balcony	d&b E3 powered by d&b E-Pac

monitoring, 4-way

Count	Equipment	Description
5	d&b MAX 12 Wedges	12"/2" coax passive, powered by QSC
1	d&b MAX 15 Wedge	15"/2" coax passive, powered by QSC

microphones

Count	Equipment
6	Shure SM 58 LCE
6	Shure SM-57LCE
1	Shure Beta 91
1	Shure Beta 52A
1	Shure Beta 87C
4	Shure Beta 98DS (Clip)
3	Shure SM 81

mic stands

Count	Equipment
12	Standard boom
4	Short boom

miscellaneous

Count	Equipment
6	BSS AR-116 DI Box active
1	CD player

rider.light

controlling, dimming

Count	Equipment	Description
1	Lighting Console	ETC Express, 48 channels, DMX512, 15" flat screen
4	Dimmer Pack	MA Lightning digital dimmer, each 12x 2.3 kW
1	Martin LightJockey 2	PC based light controlling software with 15" notebook
1	Chamsys MagicQ PC	Chamsys MagicQ PC, PC Playback Wing, 17" Touchscreen, 2 universes of 512 Channels

conventional lights

Count	Equipment	Description
12	PC	PC Rank Strand Cantata 1200W
3	PC	PC Rank Strand Quartet 650W
2	Profiler	PROFIL ETC 25-50° Zoom
4	Profiler	PROFIL Rank Strand 650W
16	PAR 56	PAR ETC Source Four 575W
4	PAR 56 Floor	Short nose PAR 56 spot with floor plate, 575W
6	PAR 64	Long nose PAR 64, 1000W
4	Flood light	Flood light, 500W
1	ACL-Set PAR 36	8x PAR 36 ACL, each 250W. All in series! Two bars of four fixtures each.

intelligent lights

Count	Equipment	Description
2	YPOC Color	Washlight Moving Head, CMY, 250W
8	YPOC 250	Moving Head, 250W discharge lamp, rotating gobo, dimmer, shutter, prism
2	Tango 250	DMX 512, 250W discharge lamp, rotating gobo, dimmer, shutter, prism
1	Martin MX4	DMX 512 Scanner, 150W
2	LED Par 36 RGB	RGB PAR, DMX 512

stands

Count	Equipment
6	1.2 m Manfrotto stand
2	2 m Manfrotto stand

background curtains

Count	Equipment
2	Velvet black 4x4 m (WxH)
8	Velvet black 1.5x4 m (WxH)

color effect filters

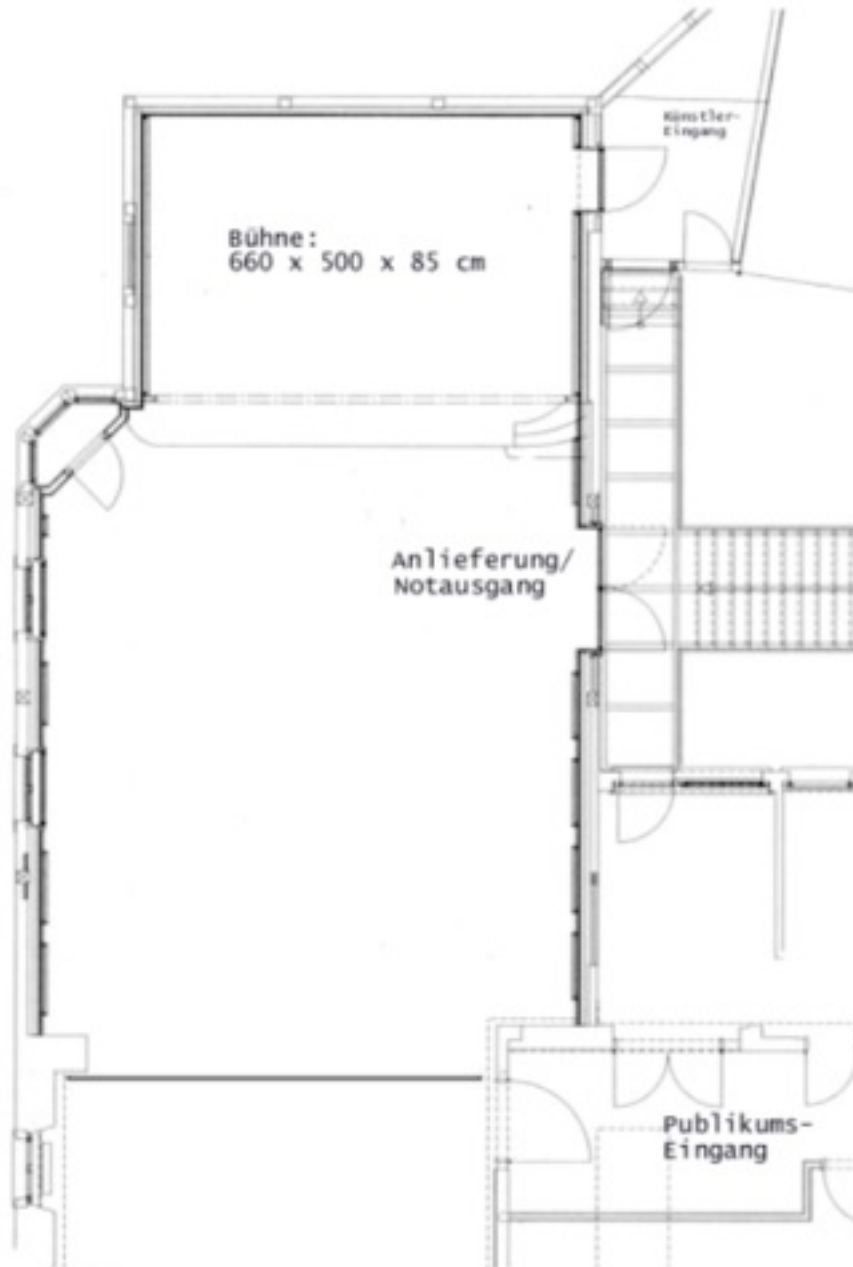
Description
LEE 135 "Deep Golden Amber"
LEE 075 "Evening Blue"
LEE 026 "Bright red"
LEE 118 "Light Blue"
LEE 085 "Deeper Blue"
and more

miscellaneous

Description
C-Clamps
T13 Cables
3 pin DMX cables
Safeties
Martin Magnum Hazer, DMX 512 controllable, 2 channels, 1200W

kultur.pur. scala

room dimensions



additional equipment

If additional equipment (sound / light) is needed we recommend to rent it from our local equipment partner crealine audio systems:



Crealine Audio Systems
Thomas Fülleemann
Kindergartenstr. 10
CH-8623 Wetzikon ZH

+41 44 930 14 08
+41 79 324 71 17

info@crealine.net

questions

For questions concerning our equipment please contact the corresponding technician or one of the following people:

technical management

Peter L. Lee
Wihaldenstr. 23
CH-8340 Hinwil

+41 79 421 02 89
petlee [at] bluewin.ch

main light technician

Remo Fritzsche
Ettenbohlstr. 24
CH-8623 Wetzikon

+41 78 600 75 85
scala [at] remofritzsche.ch

scala head office

Verein Scala
Tösstalstrasse 1
Postfach 371
CH-8623 Wetzikon

+41 43 488 04 04
buero [at] scala-wetzikon.ch